

Steps to setup printer driver – MAC OS

1. Download and install printer driver from Ricoh website

1. Click on this link

<https://www.ricoh-ap.com/downloads>

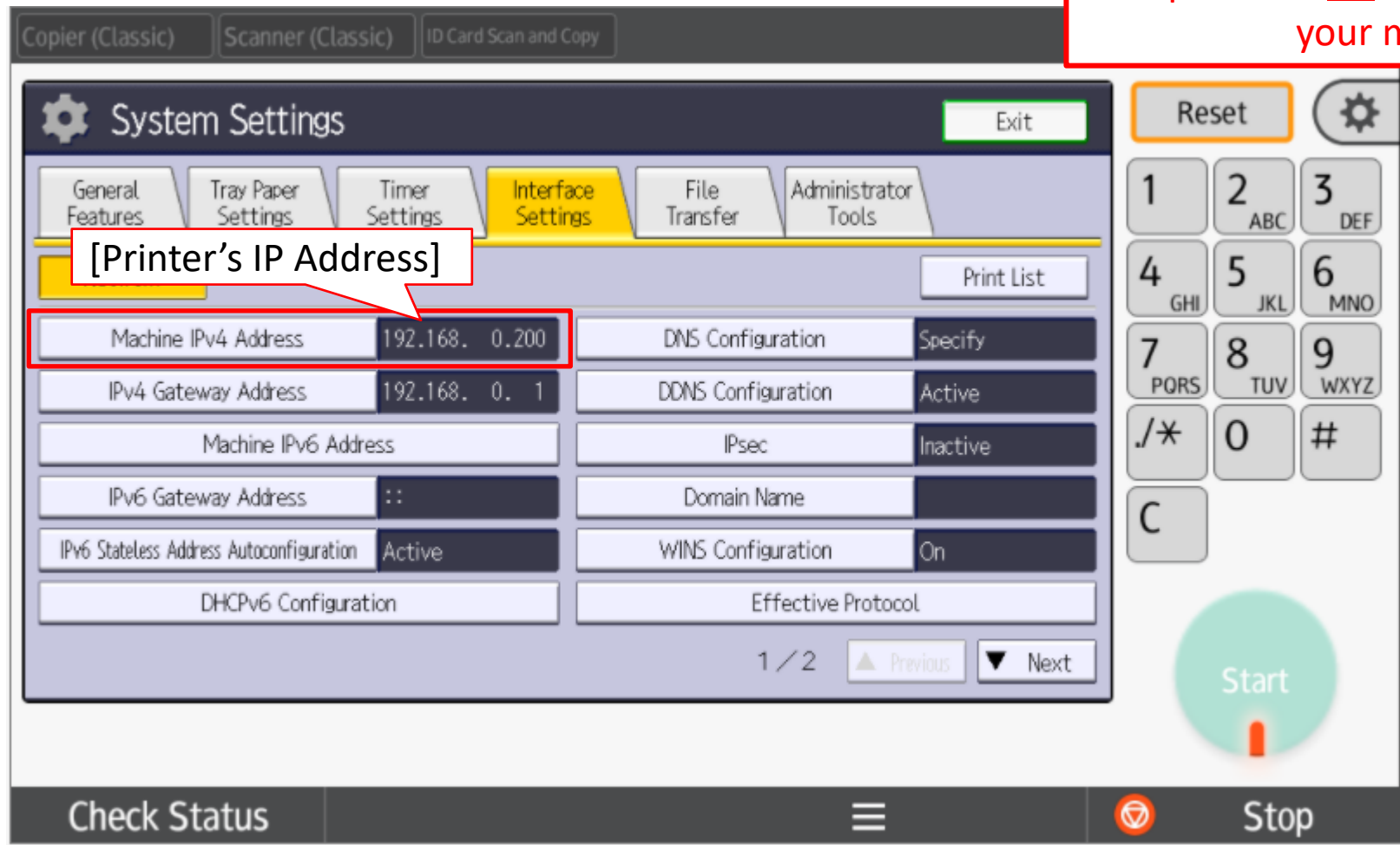
Downloads

The screenshot shows the 'Downloads' page on the Ricoh website. At the top, there are two tabs: 'Download Drivers' (selected) and 'Download Brochures'. Below the tabs is a search bar titled 'Search drivers by model name'. The search bar contains the text 'For example, to search the driver for "Ricoh SP C4100DN", enter part of the name such as "C4100".' Below the search bar is a section titled 'Search results' which is currently empty.

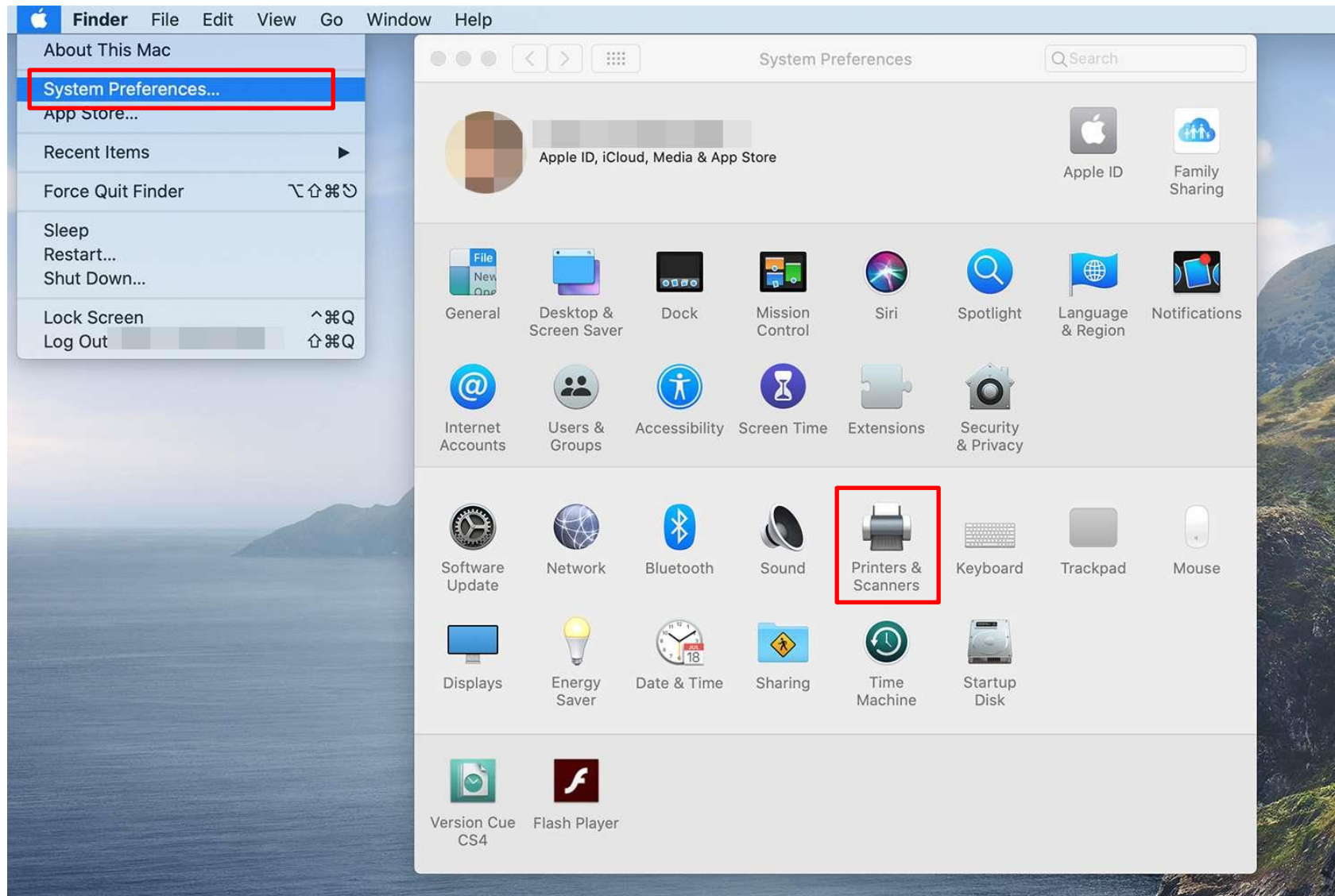
2. search for your printer model and download and install the printer driver

2. go to copier machine click [User Tools]→[Machine Features]* →[System Settings] →[Interface Settings]

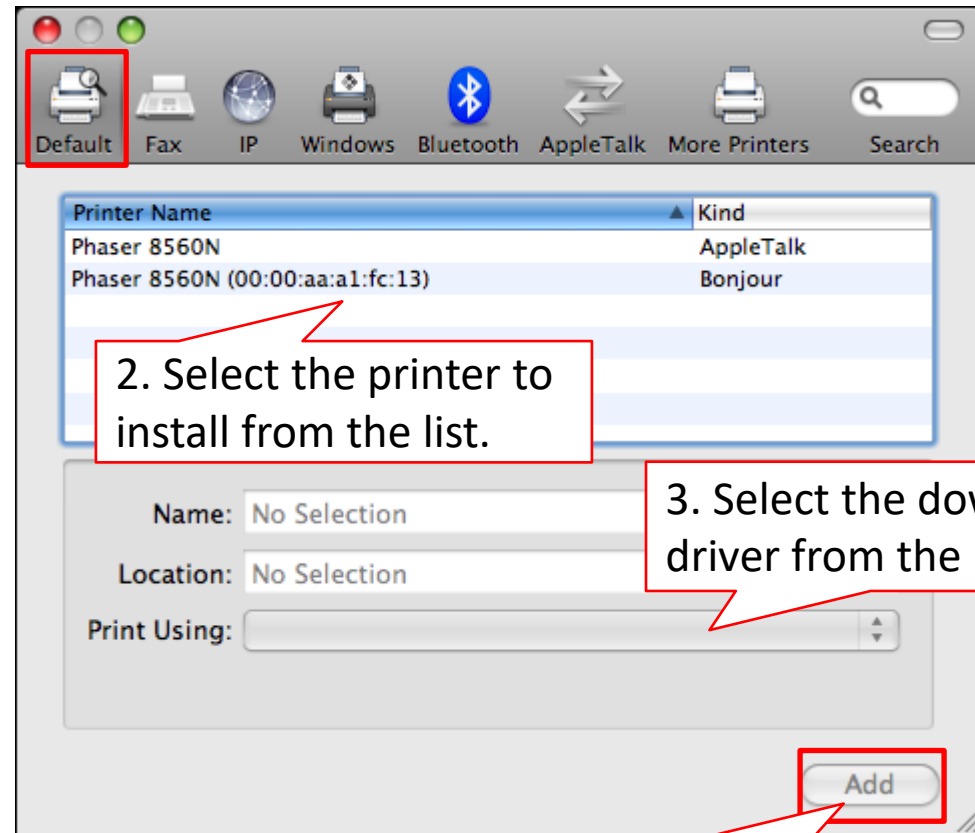
*Skip to next → if it doesn't apply to your machine



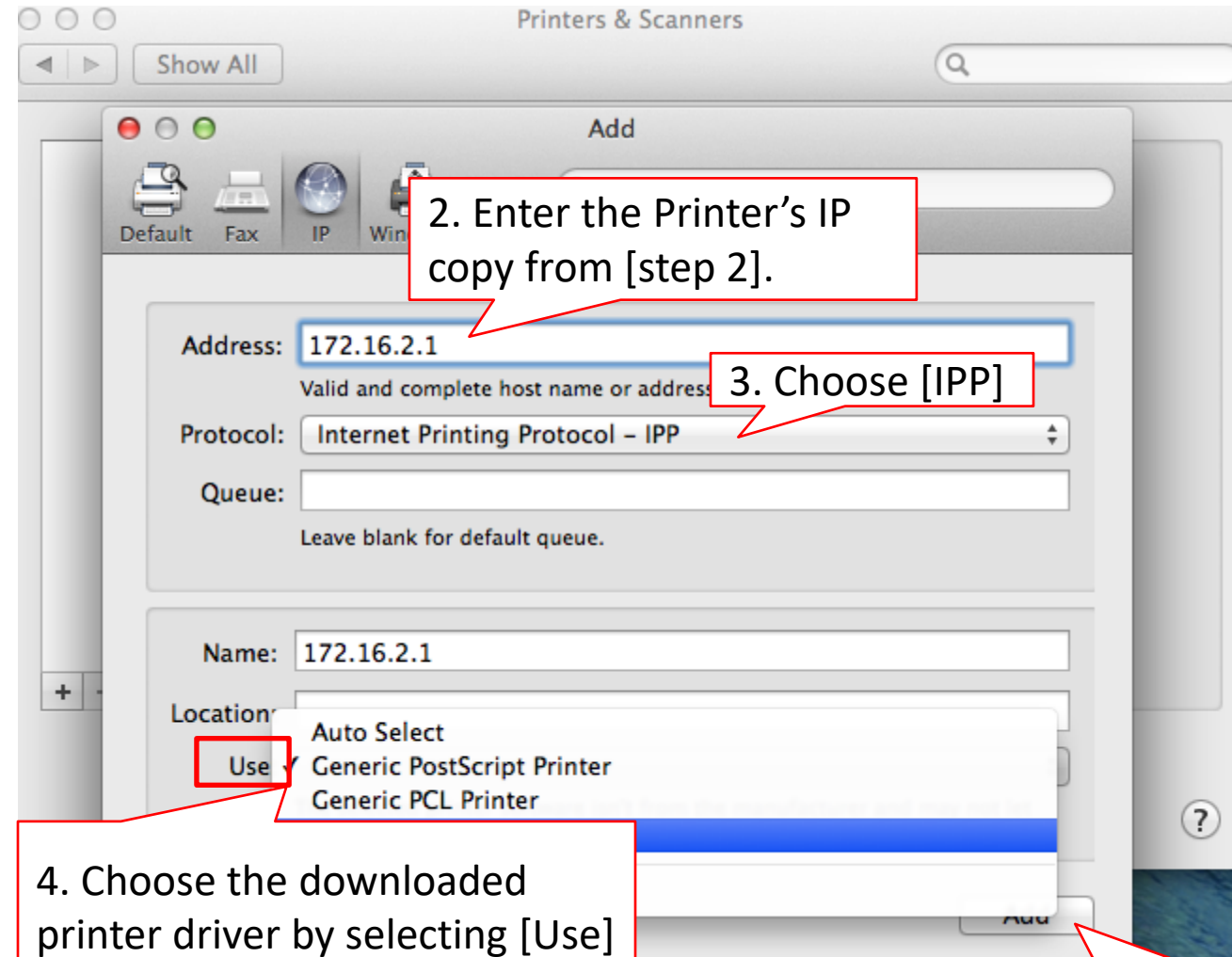
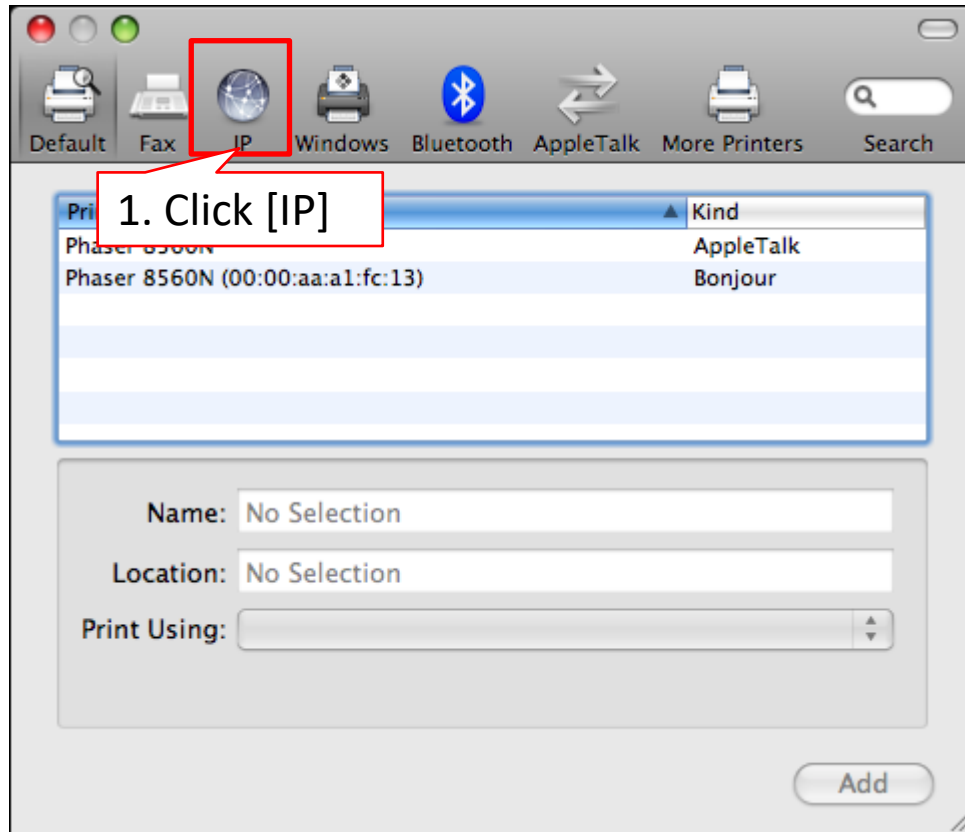
3. Go to [System Preferences...] → [Printers & Scanners]



4. Cont

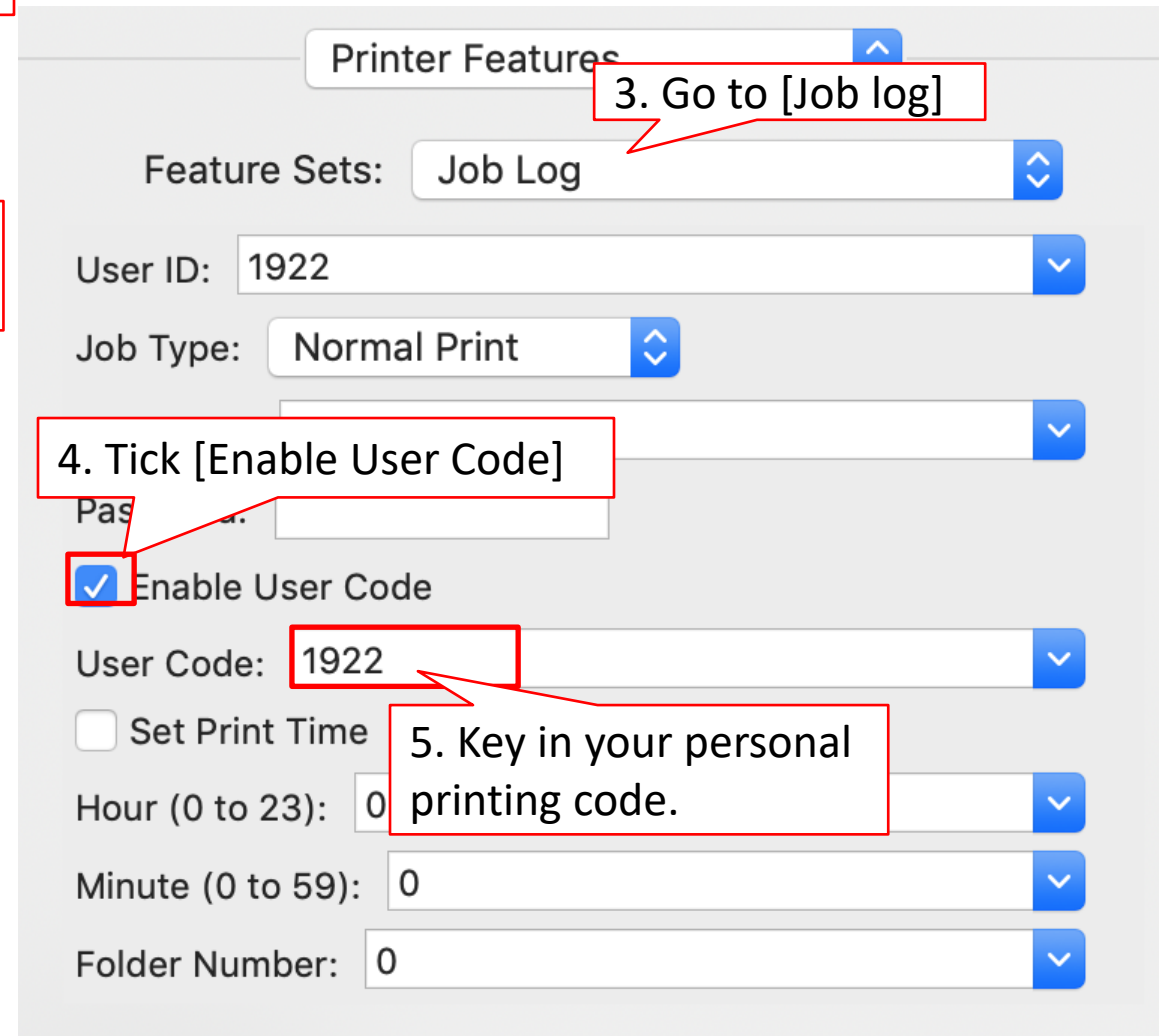
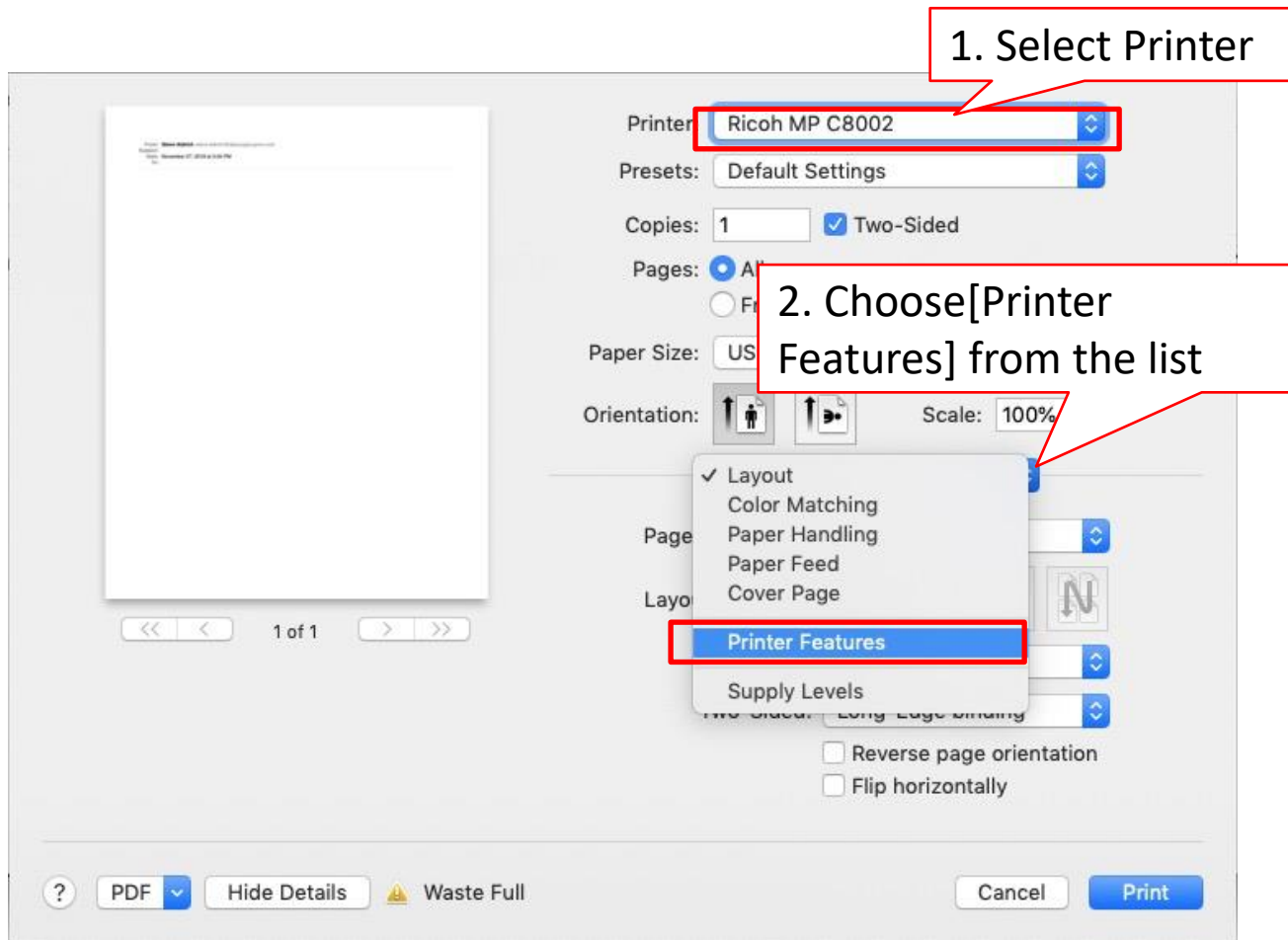


5. If the printer is not listed, go to [IP]

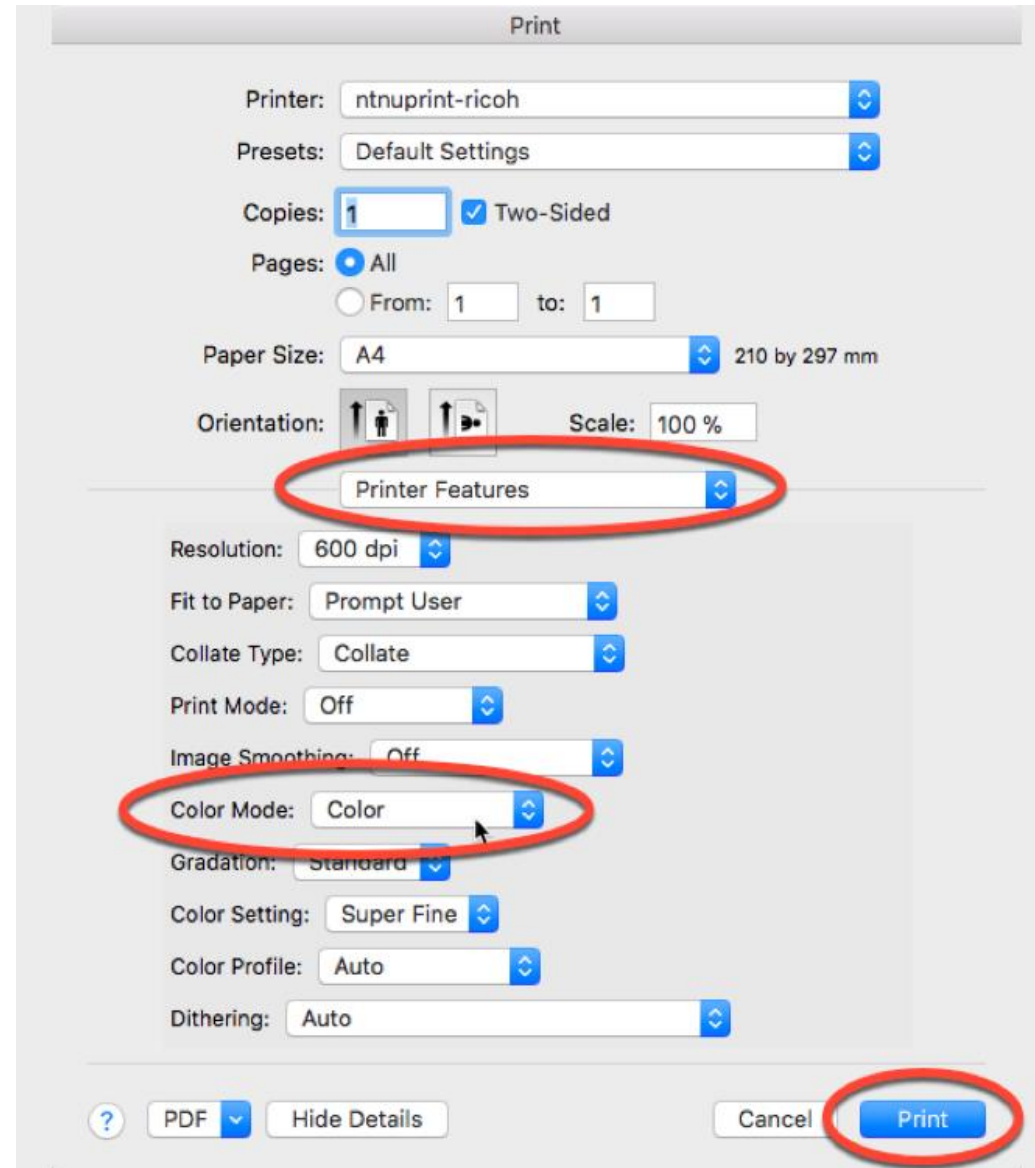


5. Click [Add] to add the printer.

*For printing password cases



*To change color/ B&W printing





- Please do not hesitate to contact us if you have any doubts.
 - ✓ Office @ (SG)6634 1883 (MY)607 556 2889
 - ✓ Email @ support@newscan.com.my