



Document Solutions

> PRINT > COPY > SCAN > FAX

TASKalfa 2553ci
TASKalfa 3253ci
TASKalfa 4053ci
TASKalfa 5053ci
TASKalfa 6053ci

COLOR MULTIFUNCTION
PRODUCT
FOR A4/A3 FORMAT

OPTIMIZED PRODUCTIVITY WITH OUTSTANDING RELIABILITY



- Sharp image quality with real 1,200 x 1,200 dpi printing resolution.
- Fast first copy time (mono: 3.4 seconds; color: 4.4 seconds) and warm up time 17 seconds or less*.
- 320GB hard disk capacity** and 4GB RAM to meet heavy duty tasks without additional hard drive.
- Support A6 original scanning from Document Processor with dual scan speed up to 220/220 ipm A4 Mono/Color***.
- Support SRA3(320mm x 450mm) size & 300g/m² paper from standard cassette.
- Allow Banner Print and Scan.
- Semi auto self-closing paper cassette.
- Support different types of robust optional Finisher.

*For TASKalfa 6053ci

**Optional for TASKalfa 2553ci / 3253ci

***For TASKalfa 4053ci / 5053ci / 6053ci, when using optional Document Processor DP-7130



Born to be Extraordinary

KYOCERA Document Solutions is Extraordinary for

- Broad Range of Multifunction Devices and Printers
- Optimized Total Cost of Ownership (TCO)
- Reliable with Long Life Drum and Parts
- New and Advanced Technology

KYOCERA Document Solutions strives to be a company that contributes to the society and demonstrates “Customer First” principle by providing customers with maximum value to increase their satisfaction. By adhering to the mission of producing document management devices that take balance between “Economy” and “Ecology”, KYOCERA Document Solutions succeeds to develop document management devices with advanced technologies which help customers to optimize office productivity and efficiency at a low total cost of ownership and, at the same time, improving environmental performance.

A Robust Color All-Rounder for Every Type of Business

These new TASKalfa range of color multifunction systems reinforce productivity and versatility to integrate seamlessly with all of business applications to fulfill document imaging needs, reduce costs, streamline workflows and enhance security effortlessly.

With awarded outstanding reliability, these color multifunction products achieve fast scan speeds, small color scan file sizes, brilliant image quality for in-house printing that boost productivity and efficiency easily.

Salient Features and Versatile Paper Handling Options to Fit What You Need

DP-7130 Document Processor (Optional)
Up to 270 sheets One-path duplex scanning and copying with double paper feed detector

DP-7110 Document Processor (Optional)
One-path duplex scanning and copying for up to 270 sheets

MT-730(B) for DF-7130/ DF-7110 (Optional)
7 bins Mailbox Sorter

JS-7100 Inner Job Separator (Optional)
For max. 100 sheets

DF-7100 Inner Finisher (Optional)
For max. 500 sheets*

AK-7110: Paper Exit Path for Finisher (Optional)
For attachment with Finisher

DF-7130 Finisher (Optional)
For max. 4,000 sheets with up to 100 sheets Staple

DF-7110 Finisher (Optional)
For max. 4,000 sheets

BF-730 Booklet Folder for DF-7110 (Optional)
For booklet

DF-7120 Finisher (Optional)
For max. 1,000 sheets

DP-7100 RADF Document Processor (Optional)
For max. 140 sheets

DP-7120 RADF Document Processor (Optional)
Only for TASKalfa 2553ci and TASKalfa 3253ci
For max. 50 sheets

Keyboard Holder 10 (Optional)
For holding keyboard

DT-730(B) (Optional)
Document Tray

Intuitive 10.1 inch Color Touch Panel NK-7120 Numeric Key (Optional)
Easy-to-view: 15°-90° adjustable angles

Card Reader Holder
For IC Card Authentication

Multi-Purpose Tray
For max. 150 sheets

Banner Guide 10 (Optional)
Guide for banner print

PF-7120 Paper Feeder (Optional)
3,000 sheets side deck (A4/Letter)

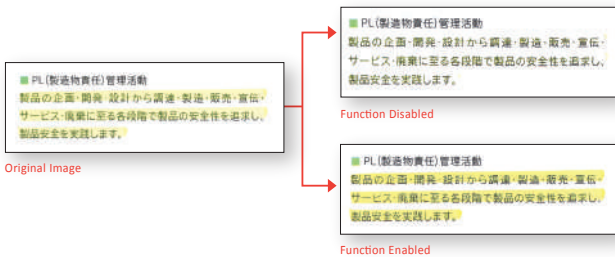
PF-7110 Paper Feeder (Optional)
For max. 1,500 sheets (A4/Letter) x 2

PF-7100 Paper Feeder (Optional)
2 cassettes with 500 sheets each



Striking Functionalities to boost Productivity and Work Efficiency at lower cost

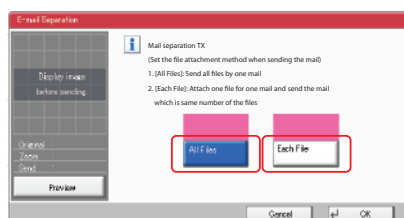
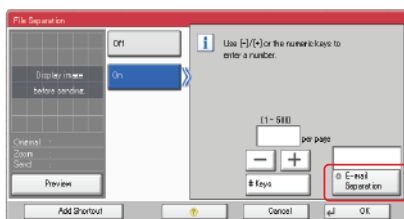
- **Program Shortcut:** Streamline and copy workflows with shortcut keys up to 50 jobs programs.
- **Test Copy:** Reduce miscopy when copying large volume by using the Test Copy mode.
- **Duplex Preview:** Display both front and back sides before printing (Copy/Box Print function).
- **Skip Blank Page:** Blank page is skipped during making scans/copies to save unnecessary cost.
- **Dedicated Preset Copy Mode for Special Original Media:** Newspaper Copy, Technical Drawing Copy, ID Copy, Highlighter Copy and Enhancement (reproduce fluorescent colors clearly).
- **USB Scan to/Direct Print:** Scan to or print directly from USB Memory in PDF, PDF/A, TIFF, JPEG or XPS format.
- **Scanned Image File Size Check:** Check the actual scanned document size does not exceed limit before actual sending to e-mail.
- **FTP/SMB/Email/Fax Multi-Sending:** Send document to different destinations (email addresses, folders, etc.) in a single scan operation.



- **Prevent Bleed-thru:** Remove unwanted background when copying or scanning printed double-sized thin paper (e.g. newspaper, NCR paper, and magazine).
- **Carbon Copy:** Print an additional copy or copies of a document from a different media source or using a different media type.
- **Banner Send & Print:** Scan and produce banner with various paper weight in-house anytime in need (One-sided only).



- **Customize Scan Split:** Scan by split at specified page and allow send all scan files via one email or send files separately by emails.



- **Simple Fax Forwarding:** Forward any incoming fax to other destinations by Email, SMB or FTP (Optional).



- **i-FAX Sending (Optional):** Send and receive i-FAX without the mail service by installing Direct SMTP function.

- **Job Skip:** Automatically prioritize the error print job to avoid machine come to a halt in case of

1. Paper empty in specific tray
2. Mismatched paper size
3. Mismatched media type

| Received Order Order of Received JOBs | | | |
|--|------|------------|--------|
| Sequence | Job | Paper Size | Status |
| 1 | 0002 | A3 | NG |
| 2 | 0002 | A4 | OK |
| 3 | 0003 | A5 | NG |
| 4 | 0004 | A4 | OK |

| JOB Execution Order Order of Printed JOBs | | | |
|--|------|------------|--------|
| Sequence | Job | Paper Size | Status |
| 1 | 0002 | A4 | OK |
| 2 | 0004 | A4 | OK |
| 3 | 0001 | A3 | NG |
| 4 | 0003 | A5 | NG |

- **Job Finish Notice:** Send email notification to specified user when a copy/scan job is completed.





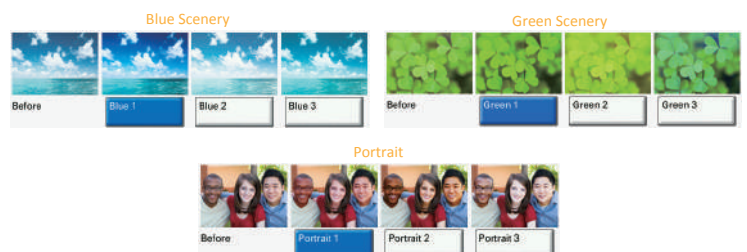
High Usability Features to Ease your Work

- **Intuitive 10.1 Inch Color Touch Panel with Easy Navigation:** Excellent clarity 10.1 inch color touch panel display with swivel type operability similar to smartphone and tablet and tiltable from 15 degree to 90 degree.
- **Convenience to use Keypad:** With on-screen virtual numeric keypad and optional hardware keypad, users can type in with ease.
- **Customizable Home Screen:** All commonly used functions and applications are set as default on Home Screen. The Home Screen can be customized easily to meet different user (or Group User) needs for immediate access to commonly used functions.
- **Printer Driver's Quick Print Tab:** Create and save frequently used custom profiles as graphic icons to allow programming of complex jobs in one click.
- **Custom Box:** Ease-of-use Custom Box provides long term job storage at device, allowing users to securely print and store jobs on the device and output them when required.
- **Motion Detector:** Detect people approaching MFP to wake up from Energy Saving Mode automatically and return to the Energy Saving Mode after job is completed.
- **Semi auto self-closing cassettes:** Cassettes auto drawing to close within 40mm.



Sharp Business Output

- Powerful color performance
 - Vibrant color with 1,200 x 1,200 dpi print resolution with same engine speed.
 - Multiple Image Adjustment Tools for output that matches your needs:
 - **Color Optimizer at KYOCERA KX Driver:** Allow users to adjust the pixels near the color value or color space of defined areas instead of the entire image by selecting 2 from 3 parameters (Hue, Light, Saturation) and add up to 10 colors in each adjustment setting.
 - **One-Touch Color Image Adjustment:** Total 9 photo adjustment modes to select optimal settings for photo image (Portrait; Blue Scenery; Green Scenery; Vivid; Soft; Sharp; Smooth; Light; Heavy).
 - **Print Gray with Black Toner:** Improve text recognition and decreases color shadowing to reproduce accurate grayscale image.

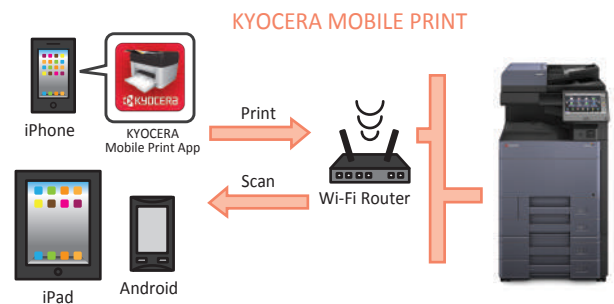




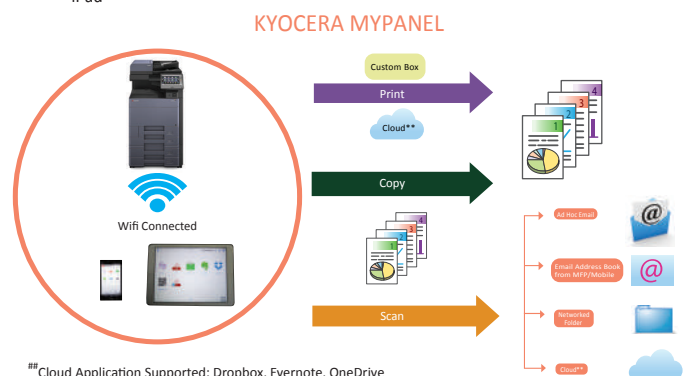
Empower Workforce Mobility with KYOCERA Mobile & Cloud Solutions

- KYOCERA Capture Manager:** A powerful document capturing software product that streamlines business workflow by digitizing documents. It enables to capture the documents from virtually any source – from an MFP, network scanner, Web browser, Email, hot-folder and smartphone. Once documents are captured, and it goes through image processing, and those processed documents can be converted into a variety of formats, such as text searchable PDFs or Office format, and finally distribute to different business systems (Email, Folder, Cloud, DMS/ECM, ERP).

- KYOCERA Mobile Print:** An app-based solution that enables users to simply and conveniently print documents, web pages, and images on demand from virtually anywhere, on their Apple and Android smartphone and tablet devices to select KYOCERA MFPs and printers. Users can also scan files and images from same MFPs to their mobile devices. Our devices also support AirPrint for iPhone and iPad.



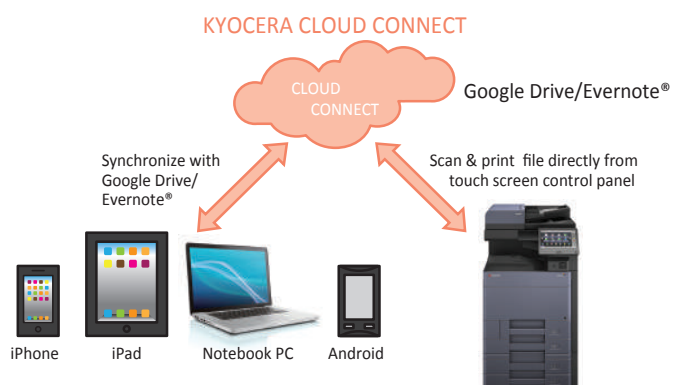
- KYOCERA MyPanel:** Use smartphone or tablet to connect a compatible networked KYOCERA printing device on your local Wi-Fi network wirelessly. Users can perform COPY/PRINT/SCAN from Custom Box or Cloud^{***} by mobile devices with personalize settings.



- KYOCERA Cloud Connect (Optional):** Retrieve and print files in Google Drive and Evernote®, a cloud service provider, directly from any KYOCERA HyPAS-enabled MFPs. Users can even upload scanned files directly to Google Drive and Evernote® – directly from the MFP, without going through a computer..

- Support WiFi Direct:** Support IB-35 Wireless LAN (Optional), makes print/scan via AirPrint/Google Cloud Print/Mopria/KYOCERA Mobile Print/KYOCERA MyPanel much easier.

- NFC (Near Field Communication):** Built-in at Control Panel to connect with Android devices.





Multiple Document Secure System and Business Applications for Advanced Security

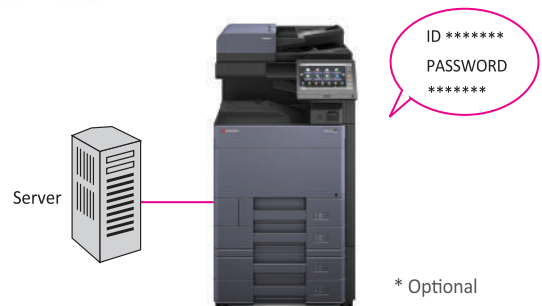
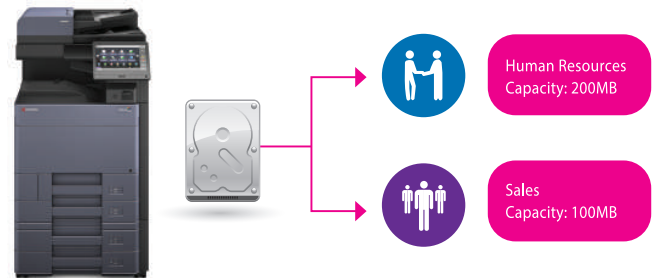
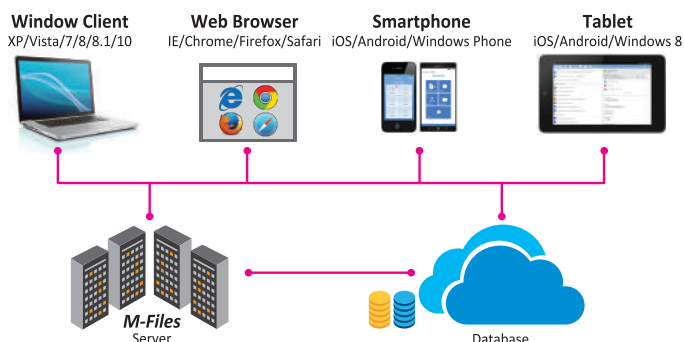
- **Password Protection Setting:** Allow administrator to set Password Policy to limit user access to designated capacity.

- **Private Print:** Release print job at the device by entering a preset four-digit access code when making a print at KYOCERA KX Driver.

- With the aid of **Network Authentication**, IT Department can manage user authentication easily by incorporating with centralized Authentication Server (NTLM, Kerberos, KYOCERA Net Manager*).

- **FAX Memory Overwrite (Optional):** Erase FAX memory after sending or receiving for confidentiality.

- **M-Files (Optional):** Manage all information e.g. documents, projects and business processes etc and adds intelligence by combining it with information from other systems (like SharePoint, Salesforces and SAP). This ensures you always find what you need, no matter what system you are using.



- **Security Watermark:** Distinguish original from copies and provides protection for sensitive document against duplication.

- **KYOCERA Data Security Kit:** Encrypt data before storing in the hard drive and automatically overwrite all data stored in the hard drive once you have finished printing, copying and scanning.



- **Card Authentication Kit (Optional)** Prevent unauthorized data access to device, manage and control usage with IC Card Authentication



Go Green

Design for energy savings

- **Fast warm up:** With the new IH fuser, the warm up time is shorter and power consumption is less.
- **Weekly Timer:** Allow administrator to preset the machine on and off time to maximize power savings.
- **EcoPrint:** Flexible EcoPrint setting to consume less energy and toner.
- **Energy Saver:** 1.0w or less power consumption at Energy Saver Mode.

Protect the environment

- Leading Long-life KYOCERA proprietary Amorphous Silicon (a-Si) Drum (with a lifetime of 600,000 prints for TASKalfa 4052ci/5052ci/6052ci), developer and component parts to reduce waste.
- Parts for Recycling.
- Non-toxic Materials.
- Quiet operation design for a comfortable Working Environment.
- Innovative black toner cartridge design with an expired one to be switched over for use as a waste toner container



Eco Mark (Japan)



EcoLeaf Environmental Label (Japan)



Law on Promoting Green Purchasing (Japan)

KYOCERA Document Solutions has been actively promoting the acquisition of various environment labels, aiming to provide products that are safe and comfortable for our customers to use and have minimal environmental impact.



Easy Control and Management, Minimum Serviceability

Smart utilities for managed print and minimize related device management costs.

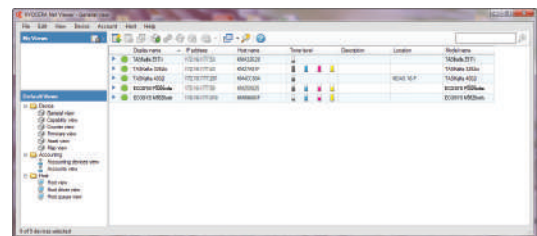
- **KYOCERA Command Center RX:** By using a web browser, the authorized administrator can access the built-in KYOCERA Command Center RX and check the operation status of the device, toner level, paper availability, as well as change settings related to security, network printing and advanced network setting etc.



- **KYOCERA Net Manager (Optional):** Protect confidential data, manage & control the overall output (copy/print/scan) and get detailed reports. Users can keep an overview of personal printing jobs with web browser. It greatly simplifies scanning processes as it automatically displays a set of personalized options.

By adding the Card Authentication Kit (Optional) for KYOCERA Net Manager, you are able to swipe ID Card to get print document directly. User administrator can also set the IC Cards to allow quick and secure access with pre-defined user restrictions such as color output restrictions and output quota.

- **KYOCERA Net Viewer:** A comprehensive network management tool used to monitor, maintain, and update up to 100 network printing devices locally and remotely. Through KYOCERA Net Viewer, administrators can simply install and update firmware on all KYOCERA connected devices while easily monitoring printed black/color pages, device configuration, accounting, toner usage, and alerts. By implementing KYOCERA Net Viewer, the manpower required to monitor connected devices is greatly reduced.



| Main Specifications | | | | | | | |
|--|--|--|--|--|-----------------|-----------------|-----------------|
| Model | TASKalfa 2553ci | | TASKalfa 3253ci | | TASKalfa 4053ci | TASKalfa 5053ci | TASKalfa 6053ci |
| Main Function | Copy, Print, Scan, Fax (Optional) | | | | | | |
| Writing Method | Semiconductor Laser | | | | | | |
| CPU | T1024 (Dual Core) 1.0GHz | | | T1024 (Dual Core) 1.2GHz | | | |
| Print Speed (A4) (Mono/Color) | 25/25 cpm | | 32/32 cpm | | 40/40 cpm | 50/50 cpm | 60/55 cpm |
| Scanning Speed (A4) 300dpi | DP-7120 (Mono/Color) | Simplex | 48/48 ipm | | ---- | | |
| | | Duplex | 15/15 ipm | | ---- | | |
| Scanning Speed (A4) 300dpi | DP-7100 (Mono/Color) | Simplex | 80/80 ipm | | | | |
| | | Duplex | 48/48 ipm | | | | |
| Scanning Speed (A4) 300dpi Dual Scan | DP-7110 (Mono/Color) | Simplex | 80/80 ipm | | 100/100 ipm | | |
| | | Duplex | 160/160 ipm | | 180/180 ipm | | |
| Scanning Speed (A4) 300dpi Dual Scan with Double Feed Detector | DP-7130 (Mono/Color) | Simplex | 100/100 ipm | | 120/120 ipm | | |
| | | Duplex | 180/180 ipm | | 220/220 ipm | | |
| Memory | Standard 4GB (Max. 4GB) | | | | | | |
| SSD/HDD Capacity | SSD 32GB (Standard) / HDD 320GB (Optional) | | | SSD 8GB (Standard) / HDD 320GB (Standard) | | | |
| HDD Data Security Kit | Standard | | | | | | |
| Warm Up Time | 18 seconds | | | 17 seconds | | | |
| Paper Capacity | Standard | 2 x 500 sheets (Cassette) + 150 sheets (MPT) | | | | | |
| | Maximum | 7,150 sheets (Main Unit + 2 x 1,500 sheets PF-7110 x1 + 3,000 sheets PF-7120 x1 + MPT) | | | | | |
| Paper Size | Cassette | Min. A6R – Max. SRA3(320mm x 450mm); Cassette 1 Min. A6R – Max. A4R (Legal) | | | | | |
| | MPT | Min. A6R – Max. SRA3(320mm x 450mm) & Banner Print of 1,220mm | | | | | |
| Paper Weight | Cassette | 52 – 300 g/m ² | | | | | |
| | MPT | 52 – 300 g/m ² | | | | | |
| Duplex Printing | Paper size: A6R – SRA3(320mm x 450mm); Paper weight: 64 - 256 g/m ² | | | | | | |
| Output Capacity | Max. 500 sheets + 100 sheets face-down with Inner Job Separator | | | | | | |
| Control Panel | 10.1 inch Color Touch LCD Panel | | | | | | |
| Dimension (W x D x H) (Main Unit) | 602mm x 665mm x 790mm | | | | | | |
| Weight (Main Unit) | Approx. 90 kg | | | Approx. 95 kg | | | |
| Power Consumption (Standard configuration) | Copy/Print Mode | 510W | 580W | 770W | 900W | 990W | |
| | Stand-by Mode | 50W | | 60W | | | |
| | Energy Saver | 0.7W | | 0.7W | | | |
| Noise (ISO7779/ ISO9296) | Copy/Print Mode | 67dB(A) | 68dB(A) | 70dB(A) | 71dB(A) | 72dB(A) | |
| | Stand-by Mode | 35dB(A) | | | | | |
| Copy Functions (Standard) | | | | | | | |
| Copy Size | Max. A3 (Legal) – Min. A6R | | | | | | |
| Resolution | 600 x 600 dpi | | | | | | |
| First Copy Time (Mono/Color) | 6.4/8.5 seconds | 5.3/7.0 seconds | | 4.5/5.9 seconds | 3.7/4.8 seconds | 3.4/4.4 seconds | |
| Zoom Ratio | Manual | 25% – 400% (1% per Step) | | | | | |
| | Pre-defined | 7RSE | | | | | |
| Multiple Copy | 1 – 9999 | | | | | | |
| Print Functions (Standard) | | | | | | | |
| Resolution | 1,200 x 1,200 dpi; 4,800 equivalent x 1,200 dpi level | | | | | | |
| PDL | PRESCRIBE, PCL6 (PCL-XL, PCL 5c), KPDL3 (Postscript 3 compatible), XPS, OpenXPS, PDF Direct Print Ver. 1.7 | | | | | | |
| First Print Out Time (Mono/Color) | 7.0/9.2 seconds | 5.9/7.7 seconds | 5.1/6.5 seconds | 4.3/5.4 seconds | 3.8/5.1 seconds | | |
| Supported Protocol | TCP/IP, NetBEUI, FTP, Port 9100, LPR, IPP, IPP over SSL/TLS, WSD Print, Apple Bonjour | | | | | | |
| Operating System Supported | Windows Server 2003, Windows Server 2008, Windows Server 2008 R2, Windows Server 2012, Windows Server 2012 R2, Windows Vista, Windows 7, Windows 8, Windows 8.1; Apple Macintosh OS X 10.5 or later; Linux | | | | | | |
| Interface | USB 2.0 High Speedx1; Ethernet 10BASE-T/100BASE-TX/1000BASE-T; USB Host Interface (USB Host)x4; NFC TAGx1 | | | | | | |
| USB Memory Printing Format | TIFF, JPEG, PDF, XPS | | | | | | |
| Mobile Printing | AirPrint, Mopria, KYOCERA Mobile Print | | | | | | |
| Scan Functions (Standard) | | | | | | | |
| Color Selection | Auto Color (Color/Gray); Auto Color (Color/B&W); Full Color; Grayscale; Black & White | | | | | | |
| Resolution | 600dpi, 400dpi, 300dpi, 200dpi, 200x400dpi, 200x100dpi | | | | | | |
| File Format | TIFF, JPEG, XPS, OpenXPS, PDF (MMR/JPg compression/High-compression PDF), PDF/A, Encrypted PDF, Searchable PDF (Optional) | | | | | | |
| Image Type Mode | Text, Photo, Text + Photo, Text (Fine Line) | | | | | | |
| Transmission Type | Scan to SMB; Scan to E-mail; Scan to FTP or FTP over SSL; Scan to USB; TWAIN Scan; WSD Scan | | | | | | |
| Address Storage | 2,000 addresses (Common address list), 500 groups (Group address list) | | | | | | |
| Fax Functions (Optional) | | | | | | | |
| Original Size | Max. A3 (Legal) – Min. A6 (statement) Banner: 1,600 (A4) | | | | | | |
| Coding Method | MMR, MR, MH, JBIG | | | | | | |
| Transmission Speed | 33.6 kbps | | | | | | |
| Memory | 12MB | | | | | | |
| DUAL FAX / Network FAX | Yes | | | | | | |
| Consumables & Options | | | | | | | |
| Toner Kit | TK-8349 (C/M/Y): 12,000 pages TK-8349 (K): 20,000 pages | TK-8339 (C/M/Y): 15,000 pages TK-8339 (K): 25,000 pages | TK-8529 (C/M/Y): 20,000 pages TK-8529 (K): 30,000 pages | TK-8519 (C/M/Y): 20,000 pages TK-8519 (K): 30,000 pages | | | |
| Maintenance Kit | MK-8335 (A/B): 200,000 pages MK-8335 (D/E): 600,000 pages | | | MK-8525 (A/B): 600,000 pages | | | |
| Document Processor | DP-7100: 140 sheets Reversing Type; DP-7120: 50 sheets Reversing Type (TASKalfa 2553ci / TASKalfa 3253ci only); DP-7110: 270 sheets One-path Duplex Scanning Type; DP-7130: 270 sheets One-path Duplex Scanning Type with double paper feed detector | | | | | | |
| Paper Feeder | PF-7100: 500 sheets x 2; PF-7110: 1,500 sheets x 2 (A4/Letter); PF-7120: 3,000 sheets Large capacity side deck (A4/Letter) | | | | | | |
| Finisher | DF-7100: 500 sheets Inner Finisher; AK-7110: Attachment Kit; DF-7120: 1,000 sheets Finisher; DF-7110: 4,000 sheets Finisher; DF-7130: 4,000 sheets Finisher with 100 sheets Staple; PH-7C: Punch Unit for DF-7110/ DF-7120/ DF-7130; PH-7120: Punch Unit for DF-7100; MT-730(B): 7 Bin Mailbox Sorter for DF-7110; JS-7100: Inner Job Separator; BF-730: Booklet Folder for DF-7110; BF-9100: Booklet Folder for DF-7130; SH-10: Staple for DF-7100/DF-7120/BF-730; SH-12: Staple for DF-7110; SH-14: Staple for DF-7130 | | | | | | |
| Fax System | Fax System 12 | | | | | | |
| Internet FAX | Internet FAX Kit(A) | | | | | | |
| Card Authentication | Card Authentication Kit(B) AC | | | | | | |
| Gigabit Ethernet Board | IB-50 | | | | | | |
| Wireless LAN Interface | IB-35 (802.11 b/g/n/Wireless LAN/WiFi Direct) | | | | | | |
| Storage Device | HD-12: HDD 320GB (TASKalfa 2553ci/ 3253ci only) | | | | | | |
| Embedded OCR | Scan Extension Kit(A) | | | | | | |
| Banner Paper Feeding Guide | Banner Guide 10 | | | | | | |
| Numeric Key Pad | NK-7120 | | | | | | |
| Document Tray | DT-730(B) | | | | | | |
| Keyboard Holder | Keyboard Holder 10 | | | | | | |

